

CAMRY



TOYOTA

ALWAYS A
BETTER WAY



TOYOTA BETTER HYBRID HAPPY TOGETHER YOU

EVERY DAY WE LOOK AHEAD, MOVE FORWARD, EVOLVE. OUR PASSION IS ALWAYS TO DELIGHT – WITH A CAR THAT EXCEEDS EXPECTATIONS, THRILLS, EXCITES, REASSURES AND DELIVERS BETTER FOR TODAY'S WAY OF LIFE.

TOYOTA. ALWAYS A **BETTER** WAY





TOYOTA

ALWAYS A
BETTER WAY

▼
Camry.

SUCCESS NEVER STOPS.



DESIGN



DRIVE



**SUPERIOR
QUALITY**





Model shown is Luxury grade.



Your time, your values, your car.

**YOU'RE ALWAYS GIVING 100%, DOING THINGS THE RIGHT WAY,
MAKING A DIFFERENCE. OUR DESIGNERS ARE THE SAME.**

Camry always makes the right impression. Its expressive features such as a powerful black grille, striking LED daytime running lights, and new projector and reflector halogen headlamps with our Automatic High Beam (AHB) system, immediately command your surroundings. Smart 16" alloy wheels and carefully profiled side rocker mouldings then lead into an optimised diffuser at the tail, with stylish rear combination lamps and chrome exhausts.





Model shown is Comfort grade.



Own the road ahead.

**LOOKING FOR A DRIVING EXPERIENCE THAT
MATCHES YOUR OWN INNER DRIVE?
YOU'VE JUST FOUND IT.**

Camry is a wonderful way to drive. We've worked tirelessly, honing every single component. Advanced engines – a 3.5 litre V6, and 2.5 or 2.0 litre four-cylinder units – give you smooth power, and are combined with a six-speed automatic gearbox that changes gear quickly, and quietly. All Camry engines are clean, responsive and fuel-efficient, matched perfectly with precise steering and a soothing ride for an outstandingly comfortable experience.





Model shown is Luxury grade.



Welcome to business class.

**WE KNOW YOUR TIME IS PRECIOUS. THAT'S WHY WE'VE
MADE CAMRY AS COMFORTABLE AS POSSIBLE, WHETHER
YOU'RE DRIVING, RELAXING OR WORKING.**

Space and quality meet cutting-edge technology in Camry. The combination of fine materials, meticulously crafted together, makes it an ideal environment for business, as well as the perfect escape. Sit in Camry's electrically adjusted, heated leather seats, with precise temperature control thanks to three-zone air conditioning and you'll know Camry is the right car for you. Camry's heated windshield and front wiper de-icer mean whatever the weather, your view ahead is clear.



YOU AND YOUR PASSENGERS CAN SET YOUR OWN TEMPERATURE

Model shown is Luxury grade.

Our technology is always progressing. Just like you.

CONTROL YOUR TECHNOLOGY. LISTEN TO YOUR FAVOURITE MUSIC; MAKE IMPORTANT BUSINESS CALLS; FIND YOUR DESTINATION IN A BUSY CITY, STRESS-FREE. DO ALL THIS AND MORE WITH CAMRY'S INTUITIVE TOYOTA TOUCH® 2 MULTIMEDIA SYSTEM.



Full map navigation

Always know where you're going thanks to Toyota Touch® 2 with Go navigation system, with a swipe function touch screen and real-time traffic information for optimum route guidance.



Advanced display audio

Accessing your music is made easy with the Toyota Touch® 2 multimedia system. Select artists, albums and tracks using the large, clear touch screen, and make the most of the superb JBL sound system.



Communication made simple

Make phone calls on the move, safely, thanks to Toyota Touch® 2's Bluetooth® 3.0 technology, and even receive text messages on the touch screen display.



Rear-view camera display

Select 'reverse' gear and the display screen automatically switches to a colour camera view of the area behind the Camry. Dynamic guide lines show your current trajectory, for ease of parking.

TOYOTA'S LATEST GENERATION OF TOUCH SCREEN



▼

10 SPEAKERS FOR TRUE LISTENING PLEASURE.



Experience crystal-clear audio reproduction with the latest premium sound system from JBL. With ten speakers, an eight-channel JBL GreenEdge amplifier, and JBL's 5.1 surround sound matrix technology, your music will have the power and range to move you. The speaker specification includes dedicated tweeter, woofer and sub-woofer units for striking treble, solid mid-range frequencies and deliciously rich bass. Listening to your favourite music will never be the same again.





Performance on demand.

CAMRY'S ADVANCED ENGINES ARE EFFICIENT. THAT MEANS NOT ONLY GREAT PERFORMANCE, BUT ALSO REDUCED FUEL CONSUMPTION AND LOWER EXHAUST EMISSIONS.

2.0 l Valvematic Petrol 6 A/T

Fuel Cons*	CO ₂ *	Power
7.2	168	150
l/100 km	g/km	DIN hp

2.5 l Dual VVT-i Petrol 6 A/T

Fuel Cons*	CO ₂ *	Power
7.8	183	181
l/100 km	g/km	DIN hp

3.5 l V6 Dual VVT-i Petrol 6 A/T

Fuel Cons*	CO ₂ *	Power
9.3	215	250
l/100 km	g/km	DIN hp

* Combined cycle.

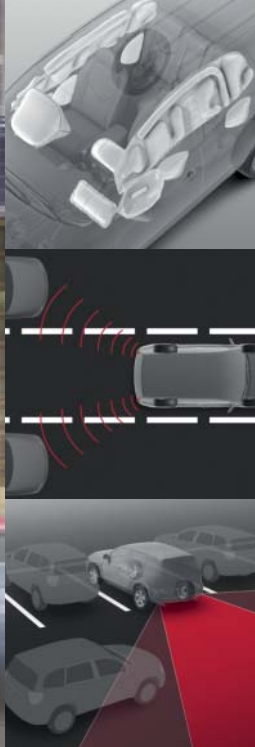
MULTI-MODE 6-SPEED AUTOMATIC TRANSMISSION

Model shown is Luxury grade.

▼
Drive with confidence.

**DRIVE A CAMRY AND YOU CAN BE SURE
WE'VE MADE YOUR SAFETY AND YOUR
PASSENGERS' SAFETY OUR PRIORITY.**





Supplemental Restraint System (SRS) – 9 airbags

This model is fitted with up to nine airbags, including driver's knee airbag and SRS airbags for both driver and front seat passenger. Other SRS airbags include large side airbags for the front and rear seats, and SRS curtain shield airbags.

Blind Spot Monitor (BSM)

The Blind Spot Monitor system allows the driver to manoeuvre more safely during lane changes. If the rear-mounted radar sensors detect a vehicle in your side or rear blind spot, a warning indicator will illuminate on the appropriate side mirror. Should you indicate to change lanes and a vehicle is in your blind spot, the warning indicators will flash to alert you that a lane change should be avoided.

Rear Cross Traffic Alert (RCTA)

RCTA allows you to reverse out of a parking space safely by detecting other vehicles approaching your blind spot area. Using quasi-millimetre wave radar, RCTA alerts you with a buzzer and flashing indicators on the outer mirrors.

9 SRS AIRBAGS PROVIDE EXTENSIVE PROTECTION



Model shown is Luxury grade.

► Camry highlights



Rear passenger package

For the ultimate in luxury. Relax with heated, power reclining rear seats, and set the cabin temperature just as you like it.



Sun blinds for rear windows

Shut out the sun's glare with blinds for the rear side windows, and the convenience of a powered rear window blind.



Boot space

Camry's spaciousness extends beyond the cabin. With 506 litres, the luggage area is more than generous.



60:40 split rear folding seats

Folding the rear seats, split 60:40 for added versatility, generates further load space.

► The new Camry range

COMFORT

Main features

- 16" alloy wheels (10-spoke)
- Daytime running lights (LED type)
- Projector & reflector halogen headlamps
- Front wiper de-icer
- Rear combination lamps
- Black fabric
- 3-spoke urethane steering wheel
- Leather gear shift knob
- Smart Entry & Start System
- Manual rear-view mirror
- Dual-zone automatic air conditioning
- Driver and passenger heated seats
- 60:40 split-folding rear seats
- Radio and CD player with WMA and MP3 capabilities

Optional features

- Rear-view camera
- 3-spoke leather steering wheel
- Power sliding front seats
- Power reclining front seats
- Toyota Touch® 2 multimedia system







PRESTIGE

Main features (additional to Comfort)

- Windshield de-icer
- Rear-view camera
- Black fabric
- 3-spoke leather steering wheel
- Woodgrain insert on gear shift knob
- Electrochromatic rear-view mirror
- Woodgrain centre console insert
- Front 12V power outlet
- Toyota Touch® 2 multimedia system
- Wireless mobile phone charger

Optional features

- 17" alloy wheels (15-spoke)
- High Intensity Discharge (HID) headlights
- Three-zone automatic air conditioning
- Power sliding front seats
- Toyota Touch® 2 with Go or Go Plus navigation systems
- JBL premium sound system









LUXURY

Main features (additional to Prestige)

- 17" alloy wheels (15-spoke)
- High Intensity Discharge (HID) headlights
- Adaptive Front light System (AFS)
- Chrome door handles
- Black leather
- Power tilt and telescopic steering wheel
- Cruise control
- Three-zone automatic air conditioning
- Rear window electric sunshade
- Power sliding front seats
- Power reclining front seats
- Heated outer rear seats
- JBL premium sound system

Optional features

- Carbon insert on gear shift knob
- Carbon centre console insert
- Toyota Touch® 2 with Go or Go Plus navigation systems



► Accessories

GENUINE TOYOTA ACCESSORIES ADD TO THE INDIVIDUALITY OF THE CAMRY EXPERIENCE. WITH CHOICES FOR EXTRA STYLE, PRACTICALITY AND INNOVATION YOU CAN CUSTOMISE YOUR CAR WITH PERSONAL TOUCHES THAT MAKE YOUR JOURNEY EVEN MORE REWARDING.



1. Wind deflector with chrome

Adds to the pleasure of driving with open windows by minimising in-cabin wind turbulence. For the front and rear.

2. Rear bumper protection plate

Made of stylish satin-finish stainless steel to shield the bumper when loading or unloading the trunk.



3. Mud flaps

Specially shaped to stop water, mud and stones spraying onto your car's body. For the front and rear.

4. Hood deflector

Fits neatly across the front of the hood to divert airborne water, mud and stones away from the windshield.



5. Bumper corner protectors

For the front and rear bumper corners to protect against accidental scrapes. In a smart black finish.

6. Door lamp

Turns on when the door is opened and projects a convenient night light with Camry logo onto the ground.



7. Illuminated scuff plates

A stylish interior design feature that also protects the door sills. In aluminium with an illuminated logo.

8. Rubber floor mats

Black or beige mats to protect your car's cabin carpets. The driver's mat has non-slip safety fixings.

9. Trunk liner

Made of durable flexible plastic with a non-slip surface and raised edges to guard the trunk carpet.

10. Toyota Hotspot

Mobile connectivity for up to five WiFi devices such as phones, tablets and laptops. Uses your choice of SIM.

Contact your local Toyota retailer for details of the full accessory range.

► Your statement



040 Pure White



070 Pearl White*



1F7 Ultra Silver*



1H1 Dark Opal*

* Metallic paint.



1H2 Dark Steel*



218 Attitude Black*

► Your choice of wheels and interior



1.



2.



3.



4.



5.



6.



7.

1. 16" alloy wheels (10-spoke)

Standard on Comfort, Prestige

2. 17" alloy wheels (15-spoke)

Standard on Luxury, optional on Prestige

3. 16" or 17" Podium II anthracite alloy wheels

Optional on all grades

4. 16" or 17" Podium II anthracite machined alloy wheels

Optional on all grades

5. 16" Rufiji alloy wheels

Optional on all grades

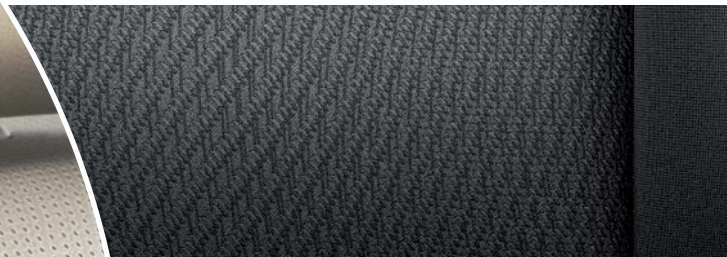
6. 17" Adeona alloy wheels

Optional on all grades

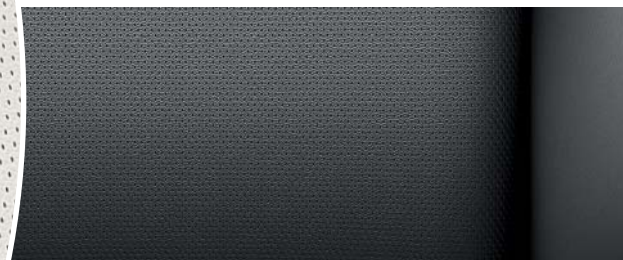
7. 17" Turbine alloy wheels

Optional on all grades





Black fabric
Standard on Comfort, Prestige



Black leather
Standard on Luxury, optional on Comfort, Prestige



Beige leather
Standard on Luxury, optional on Prestige

► Specifications

ENVIRONMENTAL PERFORMANCE	2.0 I Valvematic Petrol 6 A/T	2.5 I Dual VVT-i Petrol 6 A/T	3.5 I V6 Dual VVT-i Petrol 6 A/T
Fuel consumption (applicable legislation)			
Combined driving (litres/100 km)	7.2	7.8	9.3
Urban driving (litres/100 km)	10.0	11.0	13.2
Extra urban driving (litres/100 km)	5.6	5.9	7.0
Recommended fuel grade	95 unleaded petrol or higher	95 unleaded petrol or higher	95 unleaded petrol or higher
Fuel tank capacity (litres)	70	70	70
Carbon dioxide, CO₂ (applicable legislation)			
Combined driving (g/km)	168	183	215
Urban driving (g/km)	232	259	306
Extra urban driving (g/km)	130	140	162
Exhaust emissions			
Euro class	Euro 5	Euro 4	Euro 5

The fuel consumption, CO₂ and noise values are measured in a controlled environment on a basic production vehicle, in accordance with the requirements of European law published by the European Commission. For further information, or if you are interested in buying a basic production vehicle, please contact Toyota Motor Europe NV/SA. The fuel consumption and CO₂ values of your vehicle may vary from those measured. Driving behaviour as well as other factors (such as road conditions, traffic, vehicle condition, installed equipment, load, number of passengers, ...) play a role in determining a car's fuel consumption and CO₂ emissions.

ENGINE	2.0 I Valvematic Petrol 6 A/T	2.5 I Dual VVT-i Petrol 6 A/T	3.5 I V6 Dual VVT-i Petrol 6 A/T
Engine code	6AR-FSE	2AR-FE	2GR-FE
Number of cylinders	4 in line	4 in line	V6
Valve mechanism	16-valve DOHC, chain drive with VVT-iW and D4-S	16-valve DOHC, chain drive with Dual VVT-i	24-valve DOHC, chain drive with Dual VVT-i

ENGINE

	2.0 l Valvematic Petrol 6 A/T	2.5 l Dual VVT-i Petrol 6 A/T	3.5 l V6 Dual VVT-i Petrol 6 A/T
Fuel injection system	Electronic fuel injection, D4-S	Electronic fuel injection	Electronic fuel injection
Displacement (cc)	1998	2494	3456
Bore x stroke (mm x mm)	86.0 x 86.0	90.0 x 98.0	94.0 x 83.0
Compression ratio	12.8:1	10.4:1	10.8:1
Maximum output (DIN hp)	150	181	250
Maximum output (kW@rpm)	110/6500	133/6000	184/6200
Maximum torque (Nm@rpm)	199/4600	231/4100	346/4700

PERFORMANCE

	2.0 l Valvematic Petrol 6 A/T	2.5 l Dual VVT-i Petrol 6 A/T	3.5 l V6 Dual VVT-i Petrol 6 A/T
Maximum speed (km/h)	210	210	210
Acceleration 0–100 km/h (secs)	10.4	9	7.1
Drag coefficient	0.281	0.281	0.283

SUSPENSION

Front	MacPherson strut
Rear	Dual link

BRAKES

Front	Ventilated disc
Rear	Disc

A/T = Automatic transmission

► Specifications

DIMENSIONS AND WEIGHTS	2.0 I Valvematic Petrol 6 A/T	2.5 I Dual VVT-i Petrol 6 A/T	3.5 I V6 Dual VVT-i Petrol 6 A/T
Length (mm)	4850	4850	4850
Width (mm)	1825	1825	1825
Height (mm)	1480	1480	1480
Front tread (mm)	1575	1575	1575
Rear tread (mm)	1565	1565	1565
Overhang front (mm)	990	990	990
Overhang rear (mm)	1085	1085	1085
Wheelbase (mm)	2775	2775	2775
Turning radius tyre (m)	5.5	5.5	5.5
Interior length (mm)	2080	2080	2080
Interior width (mm)	1525	1525	1525
Interior height (mm)	1210	1210	1210
VDA luggage capacity, rear seat up (litres)	506	506	483
Gross vehicle weight – total (kg)	2100	2100	2100
Kerb weight (kg)	1455–1465	1435–1465	1525–1540

A/T = Automatic transmission

TYRES & WHEELS

	Comfort	Prestige	Luxury
16" alloy wheels (10-spoke)	●	●	—
17" alloy wheels (15-spoke)	—	○	●
Spare tyre	●	●	●

● = Standard ○ = Optional — = Not available



1575 mm

1825 mm



1085 mm

2775 mm

990 mm

4850 mm

1480 mm



1565 mm

1825 mm

► Equipment

EXTERIOR	Comfort	Prestige	Luxury
Daytime running lights (LED type)	●	●	●
Projector & reflector halogen headlamps	●	●	—
High Intensity Discharge (HID) headlights	—	○	●
Adaptive Front light System (AFS)	—	—	●
Front fog lamps	●	●	●
Headlamp cleaners	—	●	●
Automatic headlight cut-off	●	●	●
Black front grille	●	●	●
Black lower front grille	●	●	●
Body-coloured front bumper	●	●	●
Intermittent front wipers	●	●	●
Front wiper de-icer	●	●	●
Windshield de-icer	—	●	●
Green UV-filter rear windows	●	●	●
Body-coloured door mirrors	●	●	●
Electric door mirrors	●	●	●
Electrically retractable door mirrors	●	●	●
Heated door mirrors	●	●	●
Turning signal integrated in door mirrors	●	●	●

● = Standard ○ = Optional — = Not available

EXTERIOR	Comfort	Prestige	Luxury
Body-coloured door handles	●	●	—
Chrome door handles	—	○	●
Driver power door locking	●	●	●
Remote door locking	●	●	●
Body-coloured rear bumper	●	●	●
Chrome garnish on boot lid	●	●	●
Rear-view camera	○	●	●
Rear combination lamps	●	●	●
High-mounted stop lamp (LED type)	●	●	●
Back door release with push button	●	●	●
Single exhaust pipe	—	●	—
Dual exhaust pipes	—	—	●
Chrome exhaust pipe finisher	—	●	●
Mudguards	●	●	●
Front and rear parking sensors	●	●	●
Dusk sensor	●	●	●
Rain sensor	○	●	●

COMFORT

	Comfort	Prestige	Luxury
3-spoke urethane steering wheel	●	—	—
3-spoke leather steering wheel	○	●	●
Manual tilt and telescopic steering wheel	●	●	○
Power tilt and telescopic steering wheel	—	—	●
Memory function on steering wheel	—	—	●
Electric Power Steering	●	●	●
Leather gear shift knob	●	●	●
Carbon insert on gear shift knob	●	—	○
Woodgrain insert on gear shift knob	—	●	●
Chrome air vent surrounds	●	●	●
Push-start button	●	●	●
Smart Entry & Start System	●	●	●
Cruise control	○	○	●
Manual rear-view mirror	●	—	—
Electrochromatic rear-view mirror	○	●	●
Memory function on door mirrors	—	—	●
Driver and passenger sun visors	●	●	●
Lamp on sun visor	●	●	●
Mirror on sun visor	●	●	●
Woodgrain centre console insert	—	●	●
Carbon centre console insert	●	—	○
Chrome inside door handles	●	●	●
Carbon door insert	●	—	○
Woodgrain door insert	—	●	●
Leather door armrest	●	●	●
Front and rear power windows	●	●	●

COMFORT

	Comfort	Prestige	Luxury
Auto up & down function on all power windows	●	●	●
Illuminated entry system	●	●	●
Manual headlamp levelling	●	●	—
Automatic headlamp levelling	—	○	●
Dual-zone automatic air conditioning	●	●	○
Three-zone automatic air conditioning	—	○	●
Clean air filter	●	●	●
Humidifying Nanoe™ air purifier	—	○	●
Front personal lamp	●	●	●
Front door courtesy lamp	●	●	●
Rear personal lamp	●	●	●
Luggage room lamp	●	●	●
Assist grips	●	●	●
Rear coat hook	●	●	●
Front coat hook	—	●	●
Key warning tone	●	●	●
Rear armrest	●	●	●
Rear side window manual sunshades	—	—	●
Rear window electric sunshade	—	—	●
Rear window defogger with timer	●	●	●
Front 12V power outlet	—	●	●
Rear 12V power outlet	●	○	●
Alarm	●	●	●
Immobiliser	●	●	●
60:40 split-folding rear seats	●	●	○
40:20:40 split-folding rear seats	—	○	●

► Equipment

SEATS

	Comfort	Prestige	Luxury
Power sliding front seats	○	○	●
Power reclining front seats	○	○	●
Power reclining rear seats	—	○	●
Manually height adjustable driver's seat	●	●	—
Power height-adjustable driver's seat	○	○	●
Power-adjustable lumbar support on driver's seat	○	○	●
Power tilting cushion on driver's seat	○	○	●
Memory function on driver's seat	—	—	●
Driver and passenger heated seats	●	●	●
Heated outer rear seats	—	○	●
Front headrests	●	●	●
Rear headrests (2)	●	●	○
Rear headrests (3)	—	○	●

● = Standard ○ = Optional — = Not available

STORAGE

	Comfort	Prestige	Luxury
Hooks for luggage holding net	●	●	●
Front and rear cup holders	●	●	●
Rear console box	●	●	●
Glovebox with key	●	●	●
Glovebox lamp	●	●	●
Front and rear door pockets	●	●	●
Seatback pockets	●	●	●

INFO & AUDIO

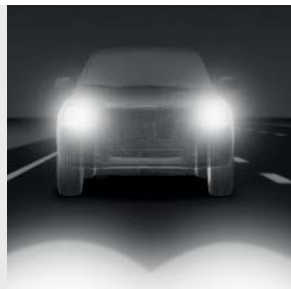
	Comfort	Prestige	Luxury
Toyota Touch® 2 multimedia system	○	●	●
Toyota Touch® 2 with Go navigation system	—	○	○
Toyota Touch® 2 with Go Plus navigation system	—	○	○
Wi-Fi connectivity	—	○	○
Voice recognition	—	○	○
6.1" multimedia display	○	●	○
7" multimedia display	—	○	●
Audio switches on steering wheel	●	●	●
Telephone switch on steering wheel	○	●	●
Voice recognition switch on steering wheel	—	○	●
Bluetooth® hands-free system	●	●	●
Wireless mobile phone charger	—	●	●
Rear-view camera display	○	●	●
Static guide lines on camera display	○	●	○
Dynamic guide lines on camera display	—	○	●
Analogue speedometer	●	●	●
Coloured TFT multi-information display	●	●	●
4.2" screen for multi-information display	●	●	●
6 speakers	●	●	○
10 speakers	—	○	●
Radio and CD player with WMA and MP3 capabilities	●	—	—
JBL premium sound system	—	○	●
Aux-in connector	●	●	●
USB connector	●	●	●

SAFETY

	Comfort	Prestige	Luxury
Active Safety			
Anti-lock Braking System (ABS) with Electronic Brake force Distribution (EBD)	●	●	●
Brake Assist (BA)	●	●	●
Vehicle Stability Control (VSC)	●	●	●
Blind Spot Monitor (BSM)	—	—	●
Rear Cross Traffic Alert (RCTA)	—	—	●
Automatic High Beam (AHB)	—	○	●
Washer fluid level warning	●	●	●
Driver seatbelt reminder	●	●	●
Passive Safety			
Supplemental Restraint System (SRS) airbags – 6 airbags	●	●	○
Supplemental Restraint System (SRS) airbags – 9 airbags	—	—	●
Pre-tensioners and force limiters	●	●	●
ISOFIX seat fixing	●	●	●
Child protection lock	●	●	●

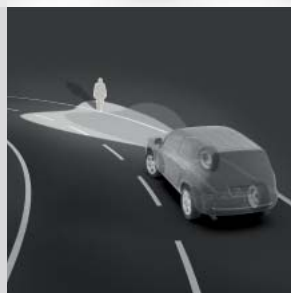
► Glossary

A RANGE OF TECHNOLOGICAL AND ENGINEERING INNOVATIONS ARE EMPLOYED TO MAKE CAMRY SAFE, COMFORTABLE, POWERFUL AND EFFICIENT.



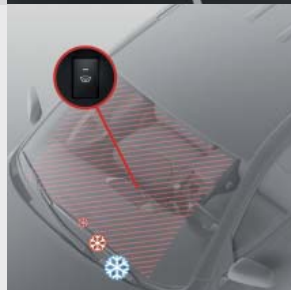
High Intensity Discharge (HID) headlights

HID headlights use less energy and are more than twice as bright as conventional halogen bulbs. This provides a safer night-time drive, especially in poor weather. These distinctive headlights are equipped with an automatic beam-levelling control to reduce glare.



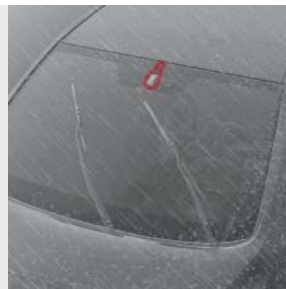
Adaptive Front light System (AFS)

AFS adjusts the direction of the headlights when approaching a bend in the road, pre-empting the vehicle's path by three seconds.



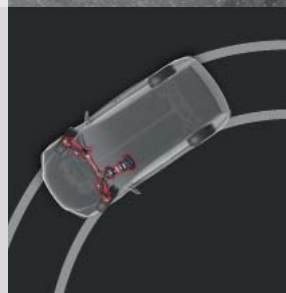
Windshield de-icer

Ensure maximum wiper performance and optimal visibility even in icy conditions with Toyota's windshield de-icer system. Hot wires within the windshield glass are fed with electrical current, which prevents the build-up of ice. Two options are available: the full windshield de-icer which heats the complete windshield, while the partial system, the front wiper de-icer, heats the wiper area.



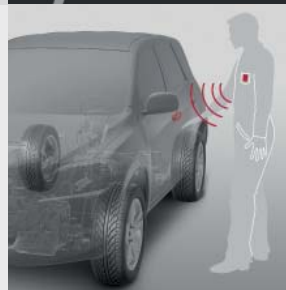
Rain sensor

The automatic rain sensor instantly sets the appropriate wiper speed and intervals.



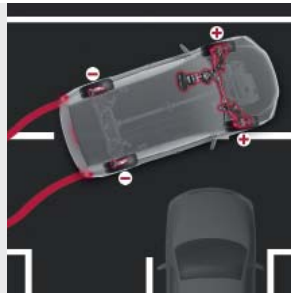
Electric Power Steering (EPS)

EPS reduces the effort necessary to turn the front wheels, improving fuel economy and making the vehicle easier to control, especially at lower speeds.



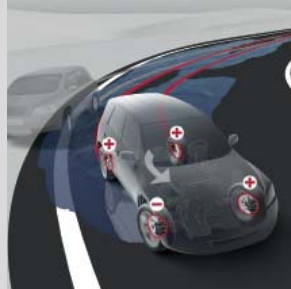
Smart Entry & Start System

Instead of a conventional key, the Smart Entry & Start System features a transmitter that allows you to unlock the doors by pulling the handle and lock them again by pressing a button. To start or stop the engine, simply press the Start/Stop button. All you need to do is carry the Smart Entry key in your pocket or handbag.



Anti-lock Braking System (ABS) with Electronic Brake force Distribution (EBD)

ABS prevents the wheels from locking while braking. EBD complements this by optimising brake force distribution between each wheel to compensate for different loads. Together the two systems help you to maintain steering control when braking heavily.



Vehicle Stability Control (VSC)

VSC automatically activates each individual brake as needed and controls engine output to help maintain stability and prevent skidding when turning sharply or cornering on slippery road surfaces.



Automatic transmission

Toyota's automatic transmissions offer a smooth, effortless drive with minimal driver effort. Gear changes are quick and responsive, and additional manual modes (availability depending on model) enable greater control if required. Automatic transmissions are engineered for the best balance of performance and economy.



2.0 l Valvematic

The powerful 2.0 litre Valvematic petrol engine includes the next generation of Toyota's successful VVT-i system. Valvematic varies the timing and lift of the engine's valves to suit your driving requirements. The result is improved responsiveness, better fuel economy and lower CO₂ emissions.



2.5 l Dual VVT-i

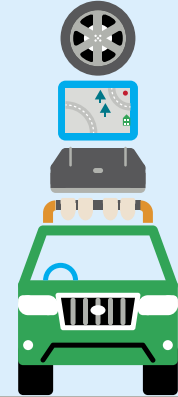
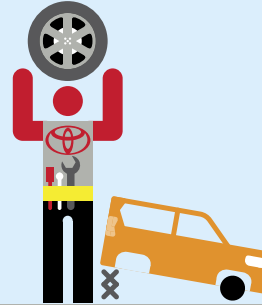
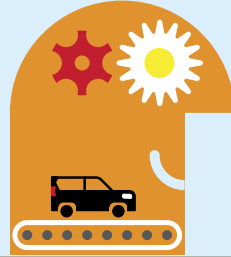
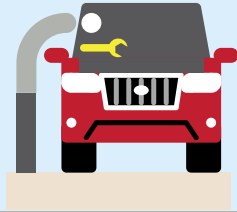
Featuring lightweight, low-emissions technologies, the 2.5 litre Dual VVT-i petrol engine is economical, quiet and powerful, with excellent low speed acceleration. Dual VVT-i optimises timing and lift of engine valves and a Tumble Control Valves (TCV) system modifies air intake, delivering reduced emissions and greater performance.



3.5 l V6 Dual VVT-i

The powerful and efficient 3.5 litre V6 Dual VVT-i petrol engine uses low-friction, lightweight components to deliver maximum performance with lower fuel consumption and emissions. Dual VVT-i technology controls valve timing and lift, while the Acoustic Control Induction System (ACIS) optimises the air intake for greater efficiency and torque at all speeds.

► Complete peace of mind with Toyota.



Toyota Quality Service

Your Toyota retailer will advise you on your car's service requirements. It will need a Health & Safety check at least once every 2 years/30,000 km (whichever comes sooner). An intermediate check is necessary every year or 15,000 km.

Toyota Low Maintenance Costs

All Toyota vehicles are designed and engineered to minimise your maintenance costs. This includes fewer parts that require servicing and, equally important, is that Toyota vehicle technology is made easily accessible so that maintenance labour time is less and pricing is competitive.

Toyota Genuine Parts

Providing the reassurance of Toyota quality, only genuine and approved components are used on your vehicle. If the vehicle is damaged, its design helps minimise the cost of repair because the most expensive-to-replace parts are deliberately located away from common damage zones. The result is ultimately less expense for parts and labour.

Toyota Accessories

Toyota genuine accessories are designed and manufactured with the same care, quality and attention to detail as Toyota vehicles. Adding a touch of style, comfort, convenience and practicality, they are tested for exceptional durability to enhance the enjoyment of your new car. All accessories are covered by a 3-year warranty when purchased together with the vehicle*.



Toyota Comprehensive Warranty

Every new Toyota comes with a 3-year/100,000 km vehicle warranty, which covers any defect caused by a manufacturing fault. Transport to the nearest authorised Toyota repairer will also be covered. In addition, a 3-year/unlimited mileage paint warranty protects against defects and surface rust caused by a manufacturing fault. Every new Toyota is covered by a 12-year/unlimited mileage anti-perforation warranty* against perforation of body panels caused by a manufacturing fault in materials or workmanship.

Toyota Eurocare

Enjoy peace of mind driving with complimentary Toyota Eurocare roadside assistance in 40 European countries for 3 years[§]. If you experience a problem with your vehicle, Toyota Eurocare offers several possibilities to keep you on the road.

* Check with your retailer for specific warranty details.

[§] Belgium 5 years/Portugal and Denmark 1 year.

Toyota Added Security

Toyota's comprehensive security system withstands the insurance industry's rigorous 5-minute attack test. The alarm system and engine immobiliser are approved by all of Europe's major insurance companies.

► Toyota's life cycle approach to environmental issues.

1

DESIGN & MANUFACTURE

Minimising environmental impact runs through every part of the Toyota business. In designing and developing a new vehicle, every component is carefully considered to ensure environmental efficiency is optimised throughout its life.



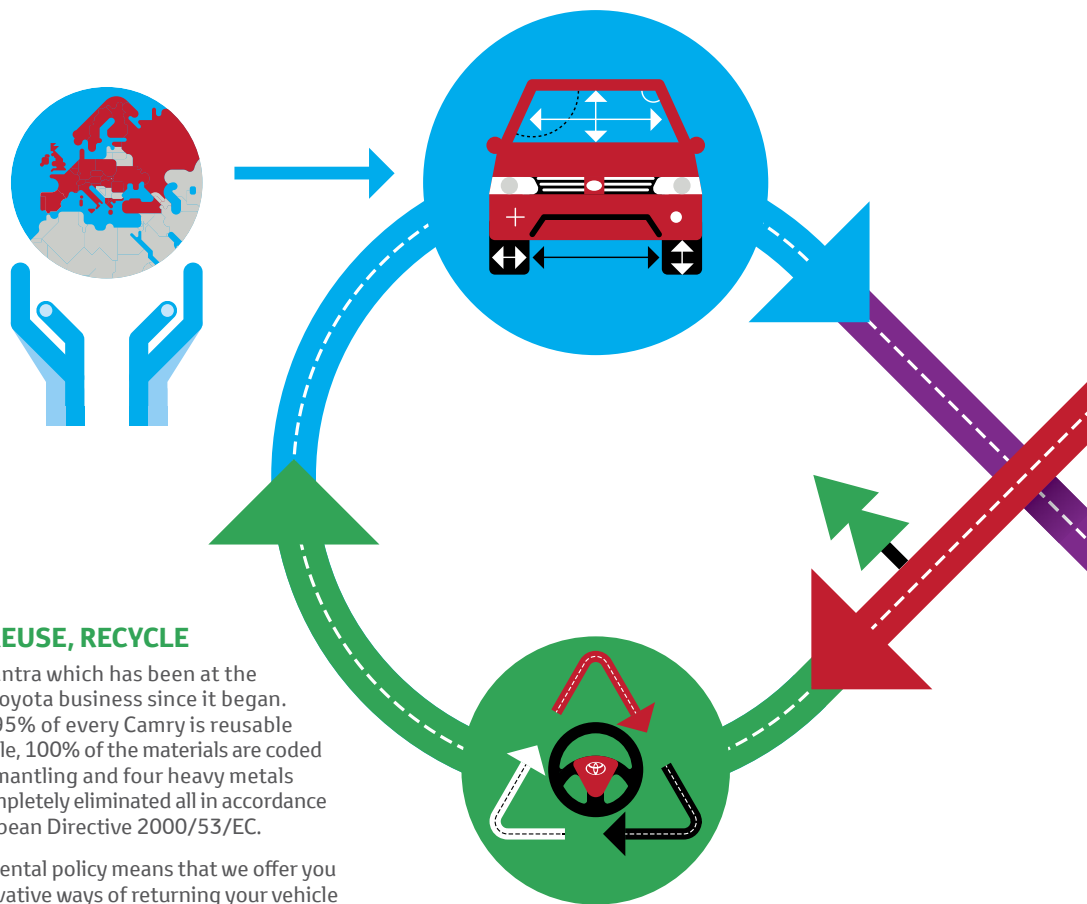
The Toyota Camry is built to the highest quality standards at the Saint Petersburg manufacturing plant in Russia.

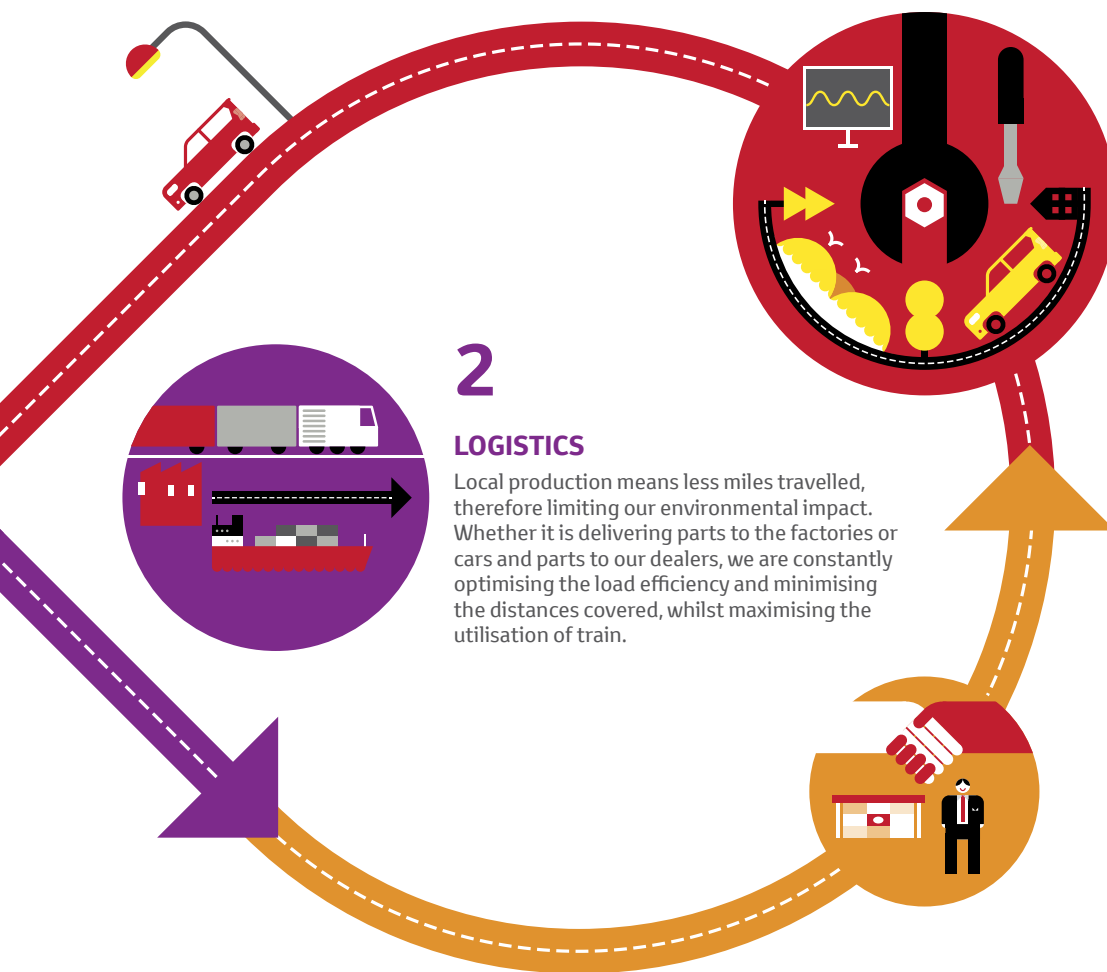
5

REDUCE, REUSE, RECYCLE

This is the mantra which has been at the heart of the Toyota business since it began. For example 95% of every Camry is reusable and recoverable, 100% of the materials are coded for easier dismantling and four heavy metals have been completely eliminated all in accordance with the European Directive 2000/53/EC.

Our environmental policy means that we offer you new and innovative ways of returning your vehicle when it eventually reaches "the end of the road". For more information visit: www.toyota-europe.com or contact your local Toyota retailer.





▼
**For Toyota, quality is a way of life.
Nothing is so good it cannot be made better.**





Model shown is Comfort grade.



Point your smartphone or webcam at the graphic
and start a new experience of Camry.



TOYOTA

ALWAYS A
BETTER WAY

**TO EXPERIENCE THE NEW CAMRY OR FOR
MORE INFORMATION, PLEASE CONTACT YOUR
LOCAL RETAILER OR VISIT OUR WEBSITE
TOYOTA-EUROPE.COM**

To the best of our knowledge, all information in this brochure is correct at time of going to print. Details of specifications and equipment provided in this brochure are subject to local conditions and requirements and may, therefore, vary from models available in your area. Please enquire with your local retailer for details on your local specifications and equipment.

- Vehicle body colours may differ slightly from the printed photographs in this brochure.
- The readability of QR Codes® present in this brochure may differ according to the scanner used.

Toyota cannot be held responsible should your device not be able to read any QR Codes®. • Toyota Motor Europe reserves the right to alter any details of specifications and equipment without prior notice. • © 2014 by Toyota Motor Europe NV/SA ('TME'). • No part of this publication may in any way be reproduced without the prior written approval of Toyota Motor Europe.